

LOCAL CHURCH

Suffolk County, NY



Partnership Plan



SNAPSHOT

1. We're planting a church in Suffolk County, NY.
2. Suffolk is home to 1.49 million people with over 7 out of 10 who are unchurched.
3. Our mission is to inspire people to follow Jesus by being a church that unchurched people love.
4. We want to invite you to partner with us.



Michael & Emily Liebler



A note from Michael

Without the Local Church I would have never discovered who Jesus is or what He did for me. I would have never learned how to play an instrument. And I would have never met many of the people who bring me such joy and fulfillment through their friendship, including my wife!

Have you ever considered what your life would be like without the local church?

God used the love, acceptance, and grace-filled culture of a local church in Missouri to reveal His love and grace to me. Now my wife, Emily, and I are passionate about using the gifts He's given us within the church to do the same for others - especially unchurched people.

That's why we're starting a new church on Long Island, NY, where we're originally from.

- **On average in the U.S. there is 1 church for every 1300 people.**
- **On average on Long Island there is only 1 church for every 4300 people.**

That gap is huge! Which is why we want to start a church that inspires people to follow Jesus *and* sends them out to start more churches in a place that *desperately* needs churches. Will you consider partnering with us?

WHY AM I READING THIS?

We are inviting you to partner with us in the following ways:



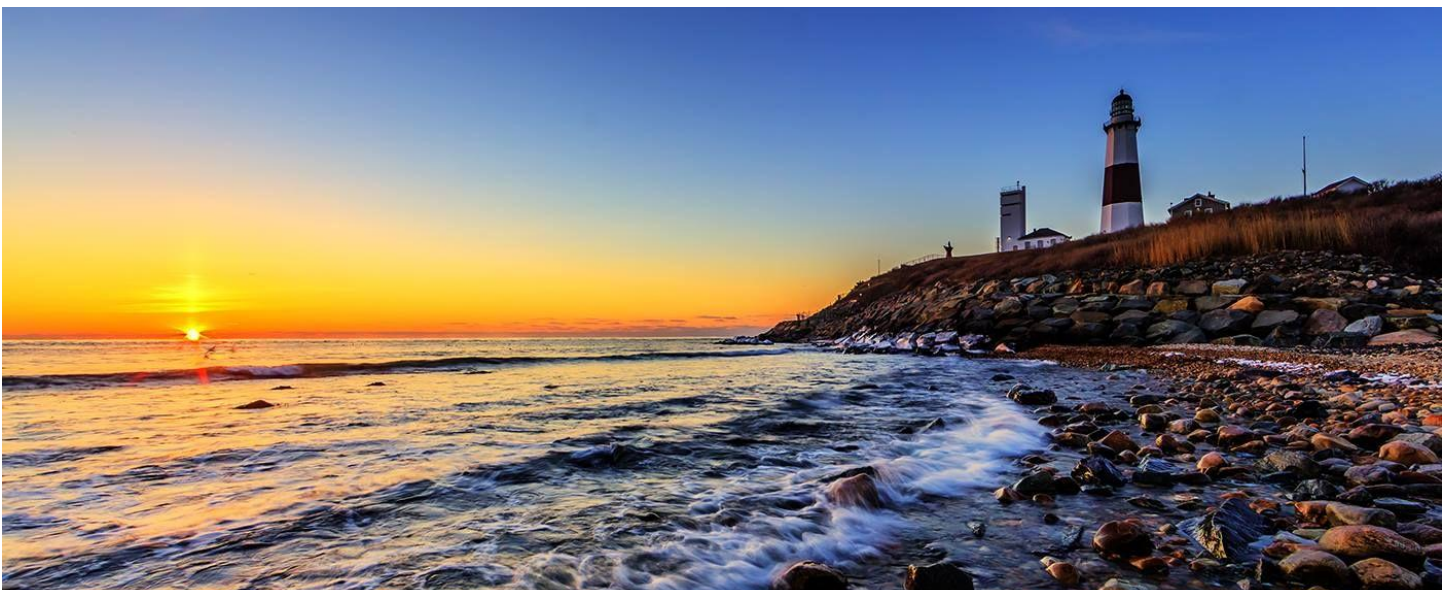
PRAY - Our goal is to cover our new church in 1000 hours of prayer before we open the doors. We can't do this alone. Let us know you're praying by scanning the QR code or clicking the word pray.



GIVE - We're asking for your financial support to help us inspire people on Long Island to follow Jesus. Will you consider becoming a monthly partner?



JOIN - If you've ever been impacted by a local church, you are the direct result of the effort, hard work, and vision of a group of people who sacrificed, prayed, donated money, moved, and dedicated their lives to start that church. Will you join us to do the same for others?



WHY PLANT A CHURCH?

Evangelism

New churches are 6 to 8 times more effective evangelistically.

.....

Discipleship

New churches typically experience 1 baptism for every 3 people compared to 1 baptism for every 95 people, the typical ratio of existing churches.

.....

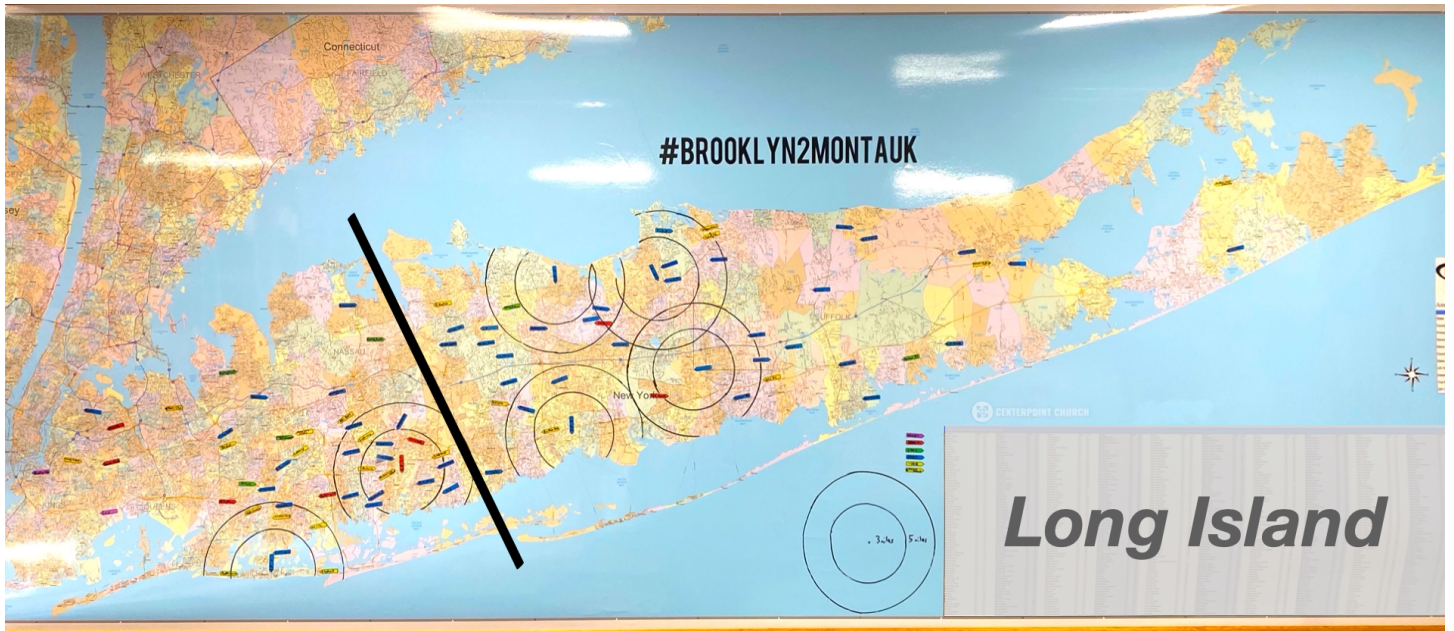
Opportunity

A church is typically most fruitful in its first 3 years. Can you think of a better time in our nation for fruitful churches to make a difference?



WHERE ARE YOU PLANTING?

Suffolk County, NY



Suffolk County (Everything to the right of the black line) is home to 1.49 million people.

In 2019 several pastors that are a part of a network called [Revive LI](#), used the map above to label all of the “life-giving” churches on the Island (churches that were growing, seeing new followers of Jesus, baptizing people, etc.). As you can see, there are only 46 churches labeled in Suffolk.

That means, if all 46 of those churches had 1,000 people attending (most have less than 500), then there would still be 1,446,000 people who are not attending a life-giving church. Even if these pastors were wrong and there were actually 250 Life-giving churches with 1,000 people in each, that still leaves 1,240,000 with no life-giving church home.

Not only is there not enough space to accommodate Suffolk County residents, there’s simply not enough manpower to effectively reach that many people with the life changing message of the Gospel. That’s why we’re planting in Suffolk County.

WHAT'S THE PLAN?

"For God was in Christ, reconciling the world to Himself, no longer counting people's sins against them. And He gave us this wonderful message of reconciliation. For we are Christ's representatives; God is making His appeal through us."

2 Corinthians 5:19-20

Our mission is to inspire people to follow Jesus

Everybody follows something. It could be the desire for power, money, or sex. It could be pride. It could even be religion. We think if you're going to follow something, your best bet is to follow Jesus. Because we really believe that *following Jesus makes your life better and makes you better at life*. He's the only one who will actually deliver what He promises: Life, joy, peace, rest, forgiveness, and so much more.

Our vision is to be a church that unchurched people love

This vision is our preferred picture of the future and how we will accomplish our mission.

To be a church —> who we are - a gathering of people choosing to follow Jesus

That unchurched people —> our target - people who don't like church and are far from God

Love —> our goal - loving like Jesus so much that we're irresistible to the unchurched

"And so my judgement is that we should not make it difficult for the Gentiles who are turning to God."

Acts 15:19



OUR CULTURAL VALUES

Values determine how we choose to behave based on what we believe. Our church wide values identify the Local Church culture. The Team values identify the culture of our staff and volunteers.

Church wide values

Be Honest

Freedom and growth starts with being honest about yourself, to yourself, to others, and to God.

Honor Others

Every human being is an image-bearing, masterly crafted child of God, and therefore deserves to be held in high esteem.

Have Fun

Jesus said that He came so that we might have “life to the full”. Our lives should be a reflection of the full life that Jesus came to give us.

Team Values

Act Like An Owner

Ownership is different from employment. Owners see differently, act faster, and modify their attitude when they have to. The stakes are higher for an owner. They are ultimately responsible for not just one department but the organization as a whole. Most owners show up on time, get it done, and welcome innovation. What if every team member at Local Church decided to act like an owner instead of a volunteer or employee? God has granted the church ownership over making disciples of all the nations. Are you acting like an owner?

Expect the 7 out of 10

7 out of 10 Long Islanders are far from God. Everything that we do is an opportunity to lower that first number. Therefore, events, programs, services, and even language needs to be adjusted to accommodate the 7 out of 10. We don't have to hold back from doing things that followers of Jesus do, or talking about things that followers of Jesus need to talk about. But we do have to do and say it in a way that includes everyone, especially those who don't follow Jesus. Are you expecting the 7 out of 10?

Keep Getting Better

If you're going to grow, you're going to have to grow on purpose. That means you're going to have to be intentional about growing as a follower of Jesus, as a leader, and as a human. You don't have to accomplish all of your goals in one day, but you do have to figure out what's next and do it. Are you growing intentionally?

“But don't just listen to God's word. You must do what it says. Otherwise, you are only fooling yourselves.”

James 1:22

OUR BELIEFS

GOD

We believe that God is the Creator and Ruler of the universe. He has eternally existed in three persons: the Father, the Son, and the Holy Spirit. These three are co-equal and are one God. (Gen. 1:1,26-27; 3:22; Psalm 90:2; Matthew 28:19; 1 Peter 1:2,11; 2 Corinthians 13:14)

JESUS

We believe that Jesus Christ is the Son of God and is coequal with the Father and Holy Spirit. Jesus lived a sinless human life and offered Himself as the perfect sacrifice for the sins of all people by dying on a cross. He arose from the dead after three days to demonstrate His power over sin and death. He ascended to Heaven and will return again someday to earth to reign as King. (Colossians 1:15, Ephesians 2:1-9, Matthew 1:22-23; John 1:1-5, 14; Hebrews 4:14-15; 1 Corinthians 15:3-4; Romans 1:3-4; Acts 1:9-11; 1 Timothy 6:14-15; Titus 2:13)



THE HOLY SPIRIT

We believe that the Holy Spirit is equal to the Father and the Son as God. He is present in the world to make men aware of their need for Jesus Christ. He lives in every believer from the moment of salvation, guides us into all truth, glorifies Jesus and convicts of sin, righteousness and judgement. He comforts us, gives us spiritual gifts, and empowers us for service. (1 Corinthians 2:12, 3:16; 2 Corinthians 3:17; John 14:16-17, 16:7-13; Acts 1:8; Ephesians 1:13; Galatians 5:25)

HUMANKIND

We believe that humankind was created in the image of God to have fellowship with Him, but became alienated from that relationship through sinful disobedience. As a result, man is incapable of regaining a right relationship with God through his own effort. (Genesis 1:27, 9:6; Ephesians 2:1-9; Psalms 51:5; Romans 5:12, 3:23)

SALVATION

We believe that the blood of Jesus Christ, shed on the cross, provides the only way for the forgiveness of sin. God freely offers salvation to those who place their faith in the death and resurrection of Christ as sufficient payment for their sin. Salvation cannot be earned, it is a gift from God. There is nothing you can do to lose your salvation. (Acts 4:12, 13:38-39; 1 Corinthians 15:1-4; Romans 4:4-5, 5:1; John 3:16; Ephesians 1:7, 2:8-9)

THE BIBLE

We believe the entire Bible is the inspired Word of God and that men were moved by the Spirit of God to write the very words of Scripture. Therefore, we believe the Bible is without error. (2 Timothy 3:15-17; 2 Peter 1:20-21)



OUR STRATEGY

These are the practical steps we will take to effectively inspire Long Islanders to follow Jesus.

The Question

We will ask questions that start with, *what's the best way to _____?* before making decisions about program & direction

Leadership

We will raise up high-capacity leaders

Relationships

We will create a culture of intentional relationship-building

Excellence

We will provide excellent environments

Community Engagement

We will serve the community regularly through fun events and practical outreach opportunities

Strategic Language

We will be intentional about avoiding “insider” language



LEADERSHIP

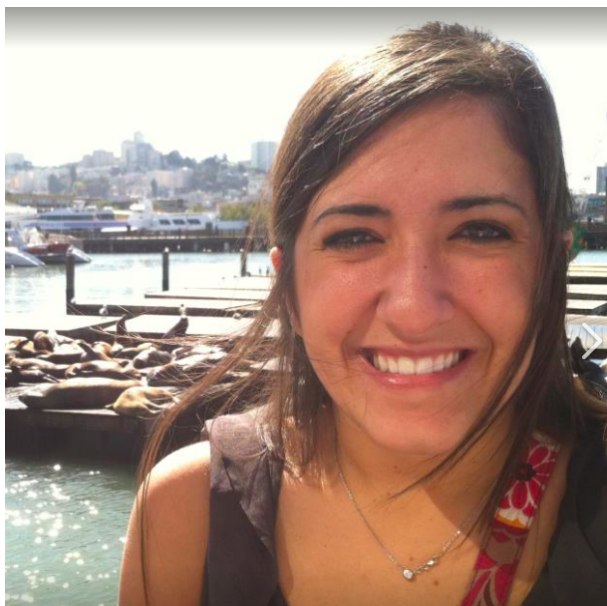


Michael Liebler

Lead Pastor

michael@localchurchli.com

Michael is dedicated to loving Jesus and loving like Jesus. He spent 4.5 years serving as the worship pastor and then the executive pastor of Calvary Lake Ozark. He is currently a church planting resident, at Grace Church in Kansas City, where he is learning about how to start a church. He is passionate about reaching the unchurched, leadership development, and his golden doodle, Amigo.



Emily Liebler

Operations Director

eliebler90@gmail.com

Emily is passionate about helping people take their next best step in their faith journey. She is also committed to being the person she needed when she was younger. She loves the next generation and empowering them to become growing followers of Jesus.

LAUNCH TEAM

The Launch Team consists of those who initially make up the start of our new church. They are fully committed to the mission, vision, beliefs, and values, and are willing to leave behind cities, homes, and comforts to be a part of this vision. They are not, and might never be, staff members, but it is certainly a possibility, especially as the church begins to grow.

The launch team will be responsible for making sure Launch Day is a huge success! They will be our initial volunteers and leaders, serving on teams such as Setup & Teardown, First Impressions, Kids, Parking, etc. Anyone can be a Launch Team member as long as they are fully committed. They will demonstrate their commitment by participating in the required trainings, huddles, Small Groups, etc. leading up to Launch Day. Our goal is to develop a team of 100 launch team members by Launch Day.



Open your camera over the QR code to learn more about joining our launch team! Or you can visit localchurchli.com



TIMELINE

Phase 1 - Residency

August 2020 - April 2021

- Prayer
- Training in Church Planting at Grace Church in Kansas City
- Continue developing Church Plant Plan
- Develop initial KC Launch Team members willing to move to NY
- Establish date to move to NY
- Begin Fundraising / Launch Team begins tithing to Local Church
- Begin paperwork for official corporation of the church (501(c)3)

Phase 2 - Relocation

May 2021 - August 2021

- Move to Suffolk County with KC based Launch Team members
- Team begins relational outreach on Long Island
- Continue fundraising
- First Small Groups begin to form
- Develop Long Island based Launch Team (Goal = 100 members by launch day)
- Begin and continue Leadership/Vision Training of Core Group
- Official Corporation of the church 501(c)3 finalized
- Determine site and launch date for launch day
- Begin purchasing operational equipment
- Marketing begins
- Begin plans for launch day

Phase 3 - Launch

August 2021 - September 2021

- Begin major preparations for launch day
- Team Leaders identified and trained
- Final preparations for launch day
- Preview services
- Official launch! (9/19/21)

BUDGET

We estimate it will cost **\$611,864.02** to launch and get us through one full year.

You'll notice that the plan includes three scenarios:

- High Impact (Green)
- Medium Impact (Yellow)
- Low Impact (Red)

The amount of funding we are able to raise will determine which scenario we will execute. We want to make the biggest impact possible which is why we need your support!

| | | | | |
|---|-------------|---|--------------|------------------------------|
| Pre-Launch Budget (High Impact) \$169,967.26 | | First Year Budget (High Impact) \$441,896.76 | | Total = \$611,864.02 |
| <i>October 2020 through September 2021</i> | | <i>Second Year Budget Add 3% \$455,153.66</i> | | |
| Administrative | \$40,900.00 | <i>Third Year Budget Add 3% \$468,808.27</i> | | Plus Year 2 = \$1,067,017.68 |
| Community Engagement | \$30,715.88 | Administrative | \$334,121.88 | Plus Year 3 = \$1,535,825.95 |
| Production Equipment | \$82,851.38 | Leadership Development | \$11,800.00 | |
| Kids Program | \$15,000.00 | Community Engagement | \$43,882.88 | |
| Hospitality | \$500.00 | Outreach | \$42,500.00 | |
| | | Kids/Students Program | \$6,092.00 | |
| | | Hospitality | \$3,500.00 | |
| Pre-Launch Budget (Med Impact) \$138,660.34 | | First Year Budget (Med Impact) \$311,064.76 | | Total = \$449,725.10 |
| <i>October 2020 through September 2021</i> | | <i>Second Year Budget Add 3% \$320,396.70</i> | | |
| Administrative | \$29,900.00 | <i>Third Year Budget Add 3% \$330,008.60</i> | | Plus Year 2 = \$770,121.80 |
| Community Engagement | \$16,715.88 | Administrative | \$241,247.88 | Plus Year 3 = \$1,100,130.40 |
| Production Equipment | \$79,505.46 | Leadership Development | \$10,000.00 | |
| Kids Program | \$12,039.00 | Community Engagement | \$20,024.88 | |
| Hospitality | \$500.00 | Outreach | \$31,000.00 | |
| | | Kids/Students Program | \$5,792.00 | |
| | | Hospitality | \$3,000.00 | |
| Pre-Launch Budget (Low Impact) \$104,801.04 | | First Year Budget (Low Impact) \$209,364.76 | | Total = \$314,165.80 |
| <i>October 2020 through September 2021</i> | | <i>Second Year Budget Add 3% \$215,645.70</i> | | |
| Administrative | \$20,000.00 | <i>Third Year Budget Add 3% \$222,115.07</i> | | Plus Year 2 = \$529,811.50 |
| Community Engagement | \$13,715.88 | Administrative | \$161,547.88 | Plus Year 3 = \$751,926.57 |
| Production Equipment | \$61,546.16 | Leadership Development | \$4,600.00 | |
| Kids Program | \$9,039.00 | Community Engagement | \$15,024.88 | |
| Hospitality | \$500.00 | Outreach | \$21,750.00 | |
| | | Kids/Students Program | \$3,942.00 | |
| | | Hospitality | \$2,500.00 | |



Open your camera over the code or visit churchplantjourney.com/budget to see how we arrived at all these numbers. Yay! More spreadsheets!

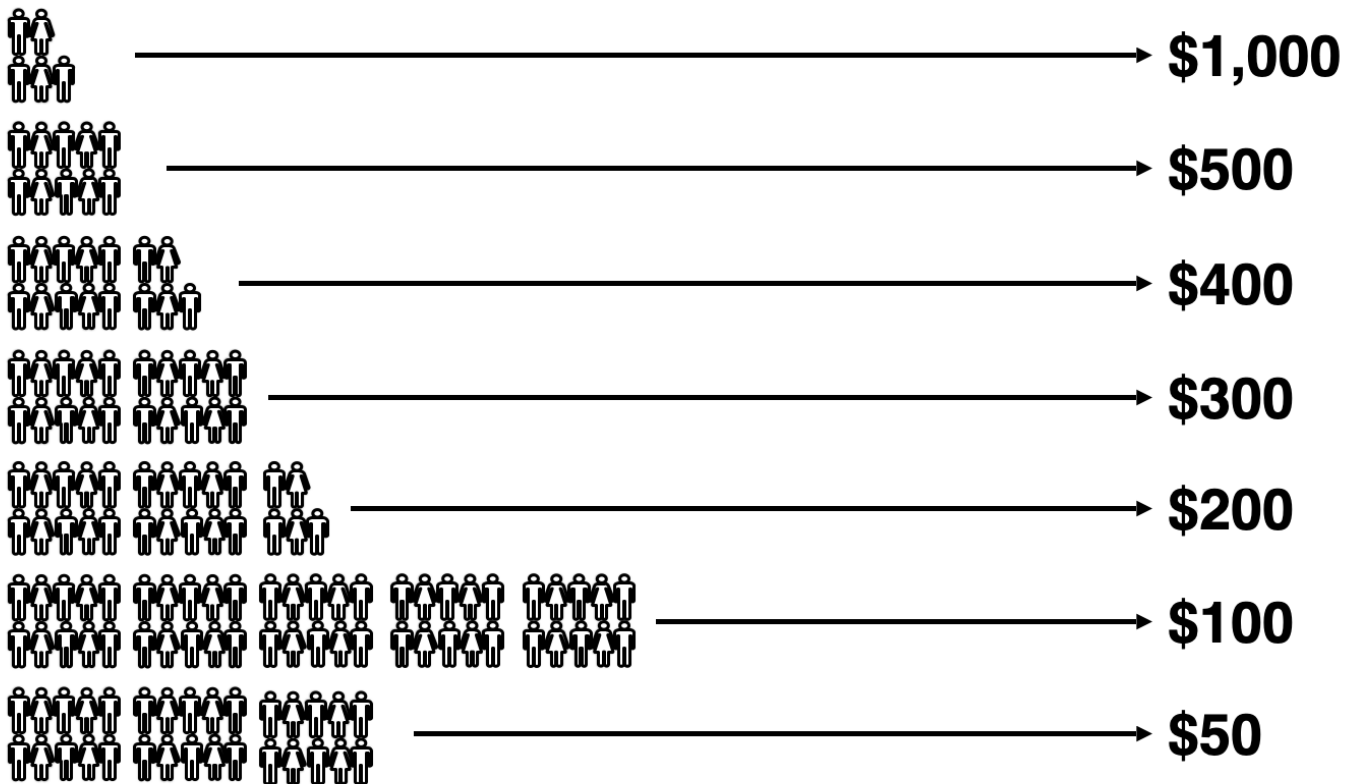
The best way to support us is by becoming a monthly donor for three years. Here's why:

- The #1 reason why church plants fail in the first three years is because of finances
- It takes new members of a church an average of 18 months before they start giving regularly
- Monthly contributions help us plan for the future and make the wisest financial decisions

We've done our best to break a big number into manageable pieces for a large team.

In the chart below, each person on the left represents an individual or a family who commits to give the number on the right each month for the next three years. It's not an exact science, but it's a start.

Monthly for Three Years

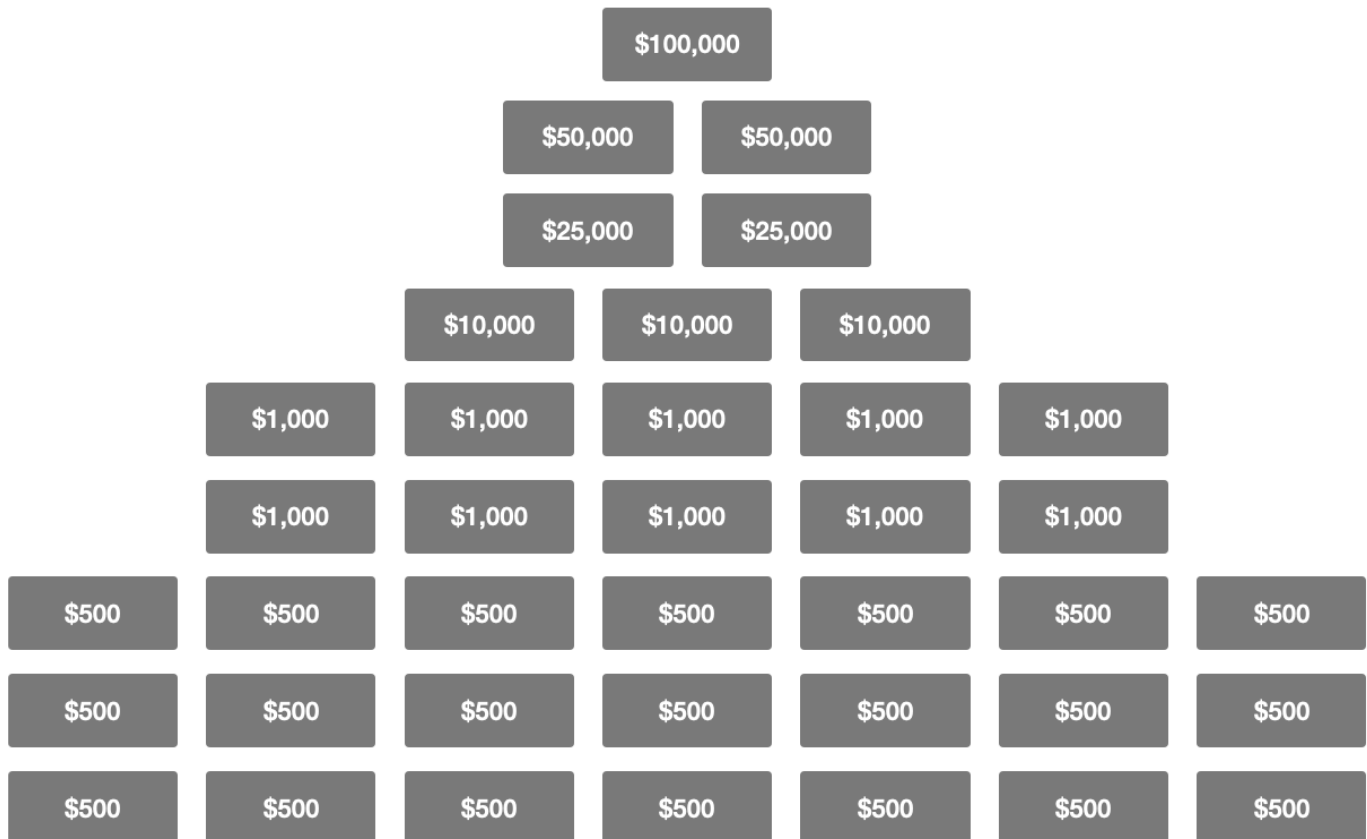


155 TEAM MEMBERS....\$33,500 A MONTH....\$402,000 TOTAL

Every donation brings us one step closer to launching a church that will inspire Long Islanders to follow Jesus.



In addition to monthly donors, the chart below illustrates the amount of single donations necessary for us to launch.



One Time Giving Partnerships = \$300,000



We're praying that God will bring a team of people around us who:

- Believe in the Lieblers
- Believe in church planting
- Will make the financial investments necessary to start this new church

Will you team up with us?

Your donations go through our sending church - Grace Church. This is great because it's tax deductible, it keeps us accountable, and Grace Church will match up to \$10,000.



Simply open your camera over this QR code to be taken directly to our secure giving page. There you can set up recurring monthly donations or give a one-time special gift. You can also visit localchurchli.churchcenter.com/giving

CONCLUSION

Another note from Michael

If you were to ask me 10 years ago if I could ever see myself planting a church, I would have laughed, because I was the music guy. I don't speak, I don't teach, I play music—that's what I'm good at. But a few years ago, I began to sense that God was prompting me. Prompting me to reach people who were once like me. The little Mikey Lieblers who are living life with a misunderstanding of who God is.

And even though it would be way easier to just keep playing music, this calling from God to reach Long Island just won't go away. Because the truth is, there are hundreds of thousands of people on that island who are exactly where I was 15 years ago—far from God. But thankfully God used the church to reach me. And I believe He will do it again.



